



THE GRAPEVINE
FIRST PRESBYTERIAN CHURCH OF SANDPOINT, IDAHO
 July and August 2024

From the Pastor...

The First of Two Topics:

When members and friends of First Presbyterian Church gathered many years ago in the church yard and removed the chain link fence and playground toys that had fallen into disrepair, a sense of openness and desire to connect with the community was felt. Funding came to have professional development of the Community Peace Garden Design. Several elements were installed, most in partnership with others, such as Inland Northwest Presbytery and Bonner County Human Right Task Force (Peace Pole), and the Sandpoint Rotary Club (Gazebo). As funds became available, other phases were worked on, such as planting fruit trees and blueberry bushes, installation of walking paths, the outdoor patio for cookouts, and raised beds for growing vegetables for the food bank. There are people who visit the Community Peace Garden almost every day.

One of the more prominent, central elements of this vision is a labyrinth. It's also, potentially, one of the more expensive, so when other projects came along, such as the need to replace the front entry to the sanctuary, capital funds were spent on doing what needed done. The Covid-19 pandemic also threw a couple years of delay into working the design plan. We are now just a year and a half away from the 10-year anniversary of the dedication of the

Peace Pole, the first element installed, which has *May Peace Prevail On Earth* written in twelve different languages.

The plan is still in effect, and I am more interested in labyrinths now than I was when it was considered for the Community Peace Garden. This summer, I participate in a labyrinth facilitator training through [Verititas](#), a group that co-creates with God in the "greening of the planet" (a phrase from Christian mystic, Hildegard von Bingen) through sharing the unique importance of labyrinths. At first, I wanted to go to a professional, in-person training held in France near the Chartres Cathedral, the location of an original medieval labyrinth, and a pre-training conference on Cosmogenesis. But another training is offered in Maryland at a retreat center outside Baltimore that also includes a Labyrinth Design Workshop led by one of the leaders in this field. That combination of facilitation and design caught my attention and will (hopefully) help inform us for the next steps in the Peace Garden Design to create a major prayer tool as part of an outdoor sanctuary space as a gift to the community.

Second of Two Topics:

North Idaho can sometimes feel remote. There are no interstate highways other than I-90 that only goes east and west, the only passenger rail service comes through Sandpoint in the middle of the night on a schedule that is notorious for being late, and centers of power and influence seem distant and, in some ways, out of touch with the daily realities we face here.

But Presbyterians get an occasional reminder of our connectional church, especially when the General Assembly (GA) meets once every two years. GA meets this year from June 25 through July 4 in Salt Lake City, Utah. There are Ruling Elders and Teaching Elders (pastors) from every presbytery, elected locally to serve nationally, so GA is *us* rather than *them*. There are many committees that meet for long hours over days and days and make recommendations to the larger GA plenary sessions for votes to affirm or deny. New leaders are elected to serve as co-Moderators, and State Clerk of the denomination. All the work is done in a prayerful context of worship and community. People who have been to a GA report that it is memorable, and they are glad to have been part of the work for Christ on behalf of the larger church. The theme for GA for this gathering in Salt Lake is “Living Into Hope.”

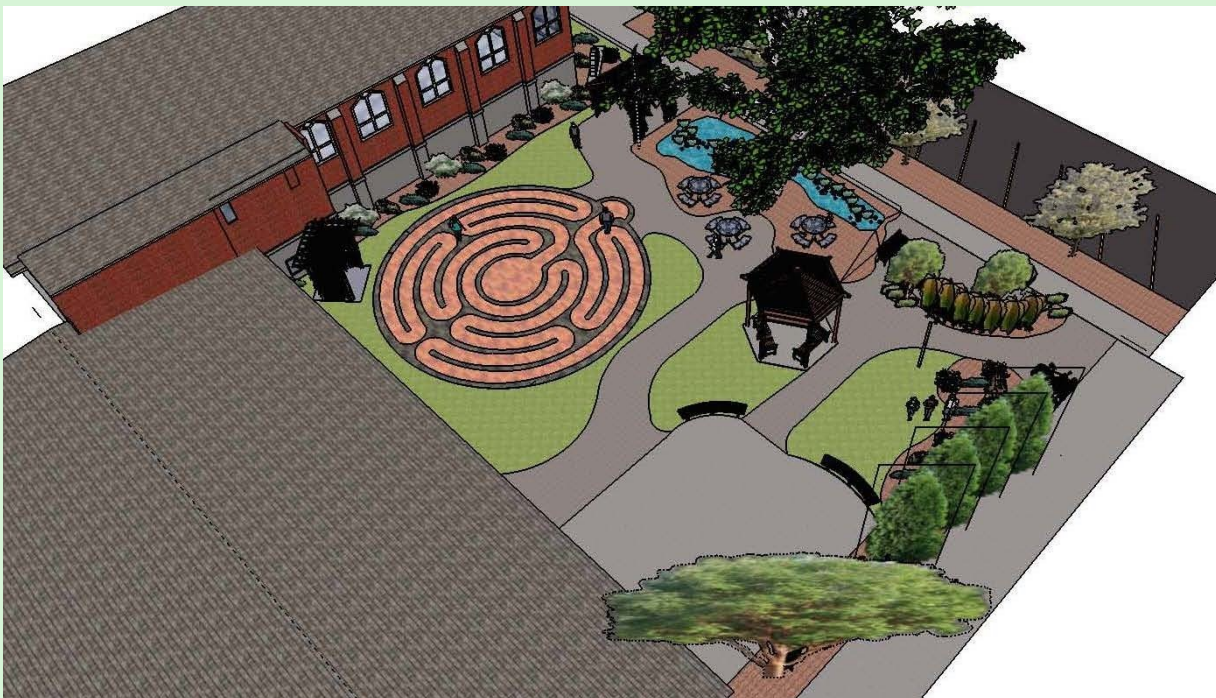
<https://ga-pcusa.org/> is the website that has livestream of sessions, news summaries, recordings of things already happened, and other resources. One group, [Presbyterians for Earth Care](#), promotes several overtures for debate and, hopefully, approval. One of the main ones involves where we as a people put our money, and how that reflects our shared values and a call to healthy stewardship.

Bruce Gillette, the Moderator of Presbyterians for Earth Care, shares that overture “[ENV 02](#) ‘On Removal of Investments in and Subsidies for Fossil Fuels’ is separated out for more careful deliberation. The committee of randomly assigned commissioners listened to the pros and cons of this overture and recommended 27-17 for [commissioners] to support it at the GA Plenary.”

On local, national, and global scales, both the institutional church and more subtle spiritual energies are at work in people who seek to help God in “greening the planet” as creation continues to unfold and help us do our part to experience abundant life in Christ.

Peace and All Good,

Pastor Andy



June Session meeting notes and highlights

Here are a few highlights from our meeting on June 19, 2024:

In attendance, Judy LaBrie, Kirsten Thompson, Paula Vincent, Mary Sturgis, Sylvia Humes, Judy McComish, and moderator Pastor Andy Kennaly. Excused Absences, Sharon Anderson and Sue Helander.

Pastor Andy reported about on his Study Leave in June here in Sandpoint, and his upcoming attendance at the Labyrinth Summer School at the Bon Secours Retreat and Conference Center in Marriottsville, Maryland. The Session approved additional funding to help defray the costs of this continuing education opportunity, knowing that deepening understanding for Pastor Andy reflects into enriched worship experiences for our community.

Though Sue Helander, elder for Building and Grounds, was out of town on June 19, she submitted detailed reports and recommendations for some upgrades and repairs at First Presbyterian:

Some shingles have blown off the church roof. Sue and Don Helander investigated and received a couple of bids, including from Granite Roofing (who is familiar with the roof as they do annual inspections). The session authorized repairs for the quoted price of up to \$1,000.

Per Building and Grounds request, the Session authorized \$750 for installation of panic/crash bars and kick plates on two of the entry/exit doors. These installations will be helpful as the building experiences increased use from groups that have relocated from the Gardenia Center to FPC.

Sand Creek Tree Service will trim some branches that encroach on the building roof in the latter part of June. Bill Love has agreed to monitor progress on this project.

Other items for future consideration are installation of a keypad controlled lock for the Alder Street entrance on the north side of the building, and investigation of replacement flooring for the tile in the education/fellowship wing, which is showing wear and requires considerable maintenance. A new water heater has been selected for installation in the kitchen and should be installed in July with some assistance from volunteers in the Attitude Adjustment AA group.

Upkeep of our beautiful, but older building requires care and financial support. In that vein, Building and Grounds requested inclusion of Building Fund envelopes in the pew rack so that money can be set aside for upkeep as necessary. For example, the roof inspection revealed that a roof replacement will be necessary in the coming years.

The Building Administration group chaired by Judy LaBrie requested authorization for the Music Bridges Borders group to rehearse in the church several times prior to the July 27 concert which has previously been authorized. Session approved this request at no additional charge to the group.

Session has authorized sale of a total of nine pews which were not in use. Four of the pews have been sold, and Session authorized Judy to work with Home Sweet Home Consignment to sell the remaining pews. Cushioned chairs will be used for seating as needed to enhance flexible and comfortable use of the space in the sanctuary.

June Session meeting notes and highlights , cont.

At the recommendation of Building and Grounds and Personnel, the Session authorized an increase in compensation for our custodian, Ken Callison. Building use has increased even though the groups that have been sharing our space have done a wonderful job of cleaning up after themselves, and have also mentioned how appreciative they are of the welcome they have received at FPC.

Christian Education is on break for summer, as is choir. Finance and Memorial and Stewardship report that receipts are meeting expectations while expenses are slightly higher than past years, in part due to the way special offering receipts are reported.

As agreed by Session, our meeting started shortly after 1:30 with prayer, and concluded shortly after 3 with another prayer. There will be a recess during July and August. Next meeting is September 17, 2024 at 1:30 p.m.

Respectfully submitted,

Kirsten Thompson, Clerk of Session



Stewardship, Finance, Memorial

June 2024

Stewardship Reflection

Rev. Sandra Moon, Ministry Relations Officer with the Presbyterian Foundation Cumberland Region wrote in a recent newsletter about her thoughts on what it means to be a steward that resonated with me, especially during this season when many of us spend as much time as possible in the great outdoors. She wrote,

“ I describe stewardship as the joyous spiritual discipline of thanking God with the way we live our lives and spend and share our resources. It’s interesting to me that to be a good steward of the natural world when recreating outdoors, we should aim to leave no trace. We should enjoy nature in a way that makes it seem like we were never there. When it comes to being stewards of our personal time, talents, and treasures, we should aim for the opposite—we should aim to leave a trace. Our acts of generosity, no matter how great or small, should impact other individuals and our communities. Those impacts can happen immediately, and they can live on even after we leave this earth through our legacies.” -Rev. Sandra Moon¹

She closes her note with this prayer, ... *“May we all grow deeper in the spiritual discipline of stewardship, thanking God by the way we live our lives and spend and share our resources, aiming to leave a trace in the world”*.

Finance Summary January 1, 2024 through June 30, 2024

Budgeted through June 30:	\$66,000
Received through June 30:	\$65,258
Expenses through June 30:	\$70,298

Per Capita Received: \$1121 (\$2496 expended in 2024 or \$39.00 per member)

Notes: Through the first six months of the year, gifts to the church are as expected and we can give thanks for the generosity of the congregation! Expenses are trending ahead of budget, partially due to the timing of larger expenses such as insurance payments and merits monitoring as we enter the final half of the year.

Wishing you a wonderful summer,

Paula Vincent, Elder Stewardship, Finance, Memorial

¹<https://www.presbyterianfoundation.org/resources/newsletters/leave-a-trace/>

Personnel

On July 30th, our own Susie Haskins completes her 15th year of service with FPC Sandpoint as financial secretary. Congratulations and thank you, Susie; we appreciate you!

The personnel committee reviewed a request from Pastor Andy regarding planned study leave in July 2024 to participate in a week-long labyrinth-themed summer school. The week includes a one-day workshop “to explore the labyrinth and the SoulCollage® process as creative and embodied practices for the journey of life”, two days of Labyrinth facilitator training, and two days of Labyrinth creation and design information. The personnel committee enthusiastically recommended Session provide financial support for this study leave request which has been approved.

Plans are underway for the annual personnel review process which is conducted annually with all FPC employees and contracted staff members. This process is designed to facilitate an exchange of information that provides for staff self-reflection of work duties and an opportunity for the personnel committee to provide feedback on staff strengths and discuss avenues for future development.

Respectfully submitted,

Tim Cochran, Paula Vincent, Dyno Wahl

Personnel Committee Members

Building and Grounds

There are a couple of pending repairs that we are waiting to be done. We have a new water heater in the kitchen that will be installed some time soon and a roof repair that needs to happen sometime this month. Pastor Andy noticed that a few of the roof tiles had blown off the roof alerting us that a roof repair might be needed. We are waiting for a scheduled inspection. The Maple trees along Alder will be receiving a major pruning to reduce the larger branches from intersecting with the roof.

Many thanks to Dave Sturgis for mowing the church lawns this season. It's been a very green year of growth. If you park along the street, you'll also notice his extra touch of edging, and the sidewalks are blown clear of debris. Thank you, Dave, for your hard work. The Community Peace Garden is ready for the downtown crowds for the 4th of July!

Happy Summer!

Sue Helander



Fellowship

You may have noticed, we have changed the sign up sheet for Fellowship to hopefully make it easier for folks to participate in providing. You may sign up to just set up or to provide goodies or to clean up; whatever feels good to you. The sheet will be sent through the pews during church and then will be placed on the table in Fellowship Hall. Thank you for helping to make our gathering more pleasurable.

Sylvia Humes, Elder

Reminder

Ronald McDonald House collects aluminum pull tabs to pay for their bedding. Since summer is upon us and we are probably consuming more soft drinks, etc., please remember to recycle your cans, but remove the pull tabs and put them in the basket by the office. They will be taken to the Coeur d'Alene RMc House. Thank you for your support.



Family Favorites

Welcome to our new newsletter column, featuring family favorite recipes. Do you have a treasured (non-copyrighted!) family recipe that you'd like to share with the church family? Drop them off in the church office or email them to Dana at Office@fpcsandpoint.org. Please share a little info about the person who created the recipe, if you can.

Since this Grapevine is for two months, we're sharing two recipes!

Huckleberry Pie—Ada Phillips

Here's another one of my favorites from my grandma's collection. Although she always used a baked pie crust (including store bought!), I also like it in a graham cracker crust, which makes it even easier and makes for a cooler kitchen if you don't have to heat up the oven to bake a crust. If I run out of huckleberries, I mix in blueberries. Frozen berries are fine for the cooked part of the filling, but you really want fresh berries to stir in uncooked. Hopefully, we'll have a good huckleberry crop this year.
—Dana Stockman

Huckleberry Pie

Ingredients:

1 cup sugar

3 Tbsp cornstarch

3/4 cup water

4 cups fresh huckleberries, divided

1 tsp lemon juice

1 pie crust (baked or graham cracker)

Bring sugar, cornstarch, water, 1 cup huckleberries, and lemon juice to a boil, and cook for 3-5 minutes until clear. Add an additional 3 cups uncooked huckleberries; pour into cooled baked pie crust. Cool and serve with whipped cream.



Family Favorites

Cowboy Coffee Cake recipe – Helen Thompson

My mom, Helen Burnstad Thompson, was a longtime member of First Presbyterian in Sandpoint. She loved the community and the church, and I'm fairly sure that her Cowboy Coffee Cake made its way to a few church potlucks over the years.

Mom was an ardent horsewoman and outdoors person. She grew up on a large cattle ranch in North Dakota, the 10th of 11 children of C.P. and Victoria Day Burnstad. Mom grew up riding horses and working cows on the Y0 ranch along with her siblings, until she was off to an independent life at the young age of 16. She worked and lived in Minnesota, North Dakota, and then Wyoming where she attended college. Mom and my dad Jim Thompson moved here to the Sandpoint area in 1957. Sadly, dad passed away in 1960, leaving mom with myself and six older siblings, three boys and three girls. In addition to keeping track of us, and working at the Forest Service, mom continued the tradition of raising horses on her small ranch on the west end of the Wrenco Loop.

By a happy coincidence mom reconnected with some old Dakota friends, Donald and Viola Nunn. Donald and Viola ran a cattle ranch in the Athol area. Each Spring and Fall Mom and a couple of my sisters and I would load up a few horses and go to assist the Nunn's with spring branding, driving the cattle on horseback to summer pasture, then gathering and herding the cows back home in the Fall. It was a great adventure for country kids who had horses, but no other livestock. Part of the fun of branding day and roundup is the potluck dinner that must follow all the hard work on horseback and in the corrals.

Here is the recipe for Cowboy Coffee Cake that my mom made every single time. I make it pretty often and have updated it a tiny bit. Enjoy! —Kirsten Thompson

Cowboy Coffee Cake

Preheat oven to 350. Ingredients and instructions:

2.5 cups all-purpose flour (I use unbleached white and whole wheat pastry flour, ratio about 2 to 1)

2 cups brown sugar

½ tsp salt

2/3 cup shortening (butter flavor Crisco works well)

Mix the above ingredients until crumbly. Reserve ½ cup for topping.

To remainder add – ½ tsp soda and ½ (or more to taste) tsp cinnamon, and mix well.

Beat two eggs, and add 1 cup sour milk (make with 1 1/3 Tbsp vinegar with enough sweet milk to make a cup). Stir liquid into flour mixture. If desired, add ½ pecan pieces.

Pour batter into greased 9 X 13 pan. Top with reserved flour, sugar, shortening mixture.

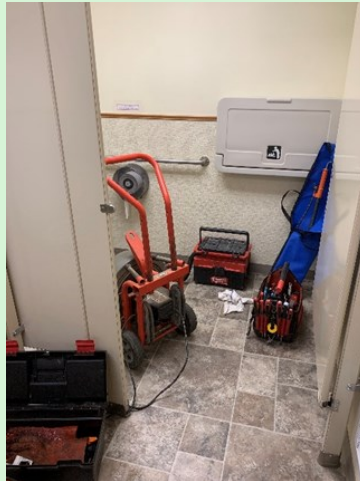
Bake at 350 degrees for 25 – 30 minutes, until toothpick comes out clean.

Enjoy warm or cold. Makes a hungry cowboy or cowgirl very happy!

Here's a picture of a temporary scene from a few hours on a Friday afternoon in late June. The plumbing situation gave the Community Peace Garden an added element.



What do a snake and a camera have in common? They both go down the drain!



To clear a clog and visually inspect the sewer pipe, both snake and camera were used from the women's restroom. The culprit? A wooden stick and a granite rock someone dropped down the sewer cleanout pipe 75 feet away from the toilet, out by the big birch tree. The broken cap on that pipe has been repaired and a picnic table now sits over the access to keep it less noticeable and minimize a trip hazard.



July 27 **Music Bridges Borders concert**

August 27 **September Grapevine articles due!**



7/3 Annie Welle

7/9 Don Deters

7/31 Chuck Bauer

8/10 Darcy Taylor

8/17 Lexie de Fremery

8/18 Patti Deters

8/22 Susie Haskins

8/27 Shirley Parker

Regular Monthly Events



Sunday

- 9:30 a.m. Worship, In-Person and Livestream (<https://www.youtube.com/@firstpresbyteriansandpoint>)
- 7:00 p.m. AA meeting

Monday-Saturday

- 7:00 a.m. AA meeting

Monday

- 9:00 a.m. TOPS meeting (Take Off Pounds Sensibly)
- 6:00 p.m. Al-Anon meeting

Tuesday

- 12:30 p.m. to 2:00 p.m. Book Study and Contemplative Prayer Group
- 7:00 p.m. AA meeting

Wednesday

- 11:00 a.m. to 1:00 p.m. Rainbow Soup Kitchen community meal
- 7:00 p.m. AA meeting

Thursday

- 12:00 p.m. Al-Anon meeting
- 7:00 p.m. AA meeting



First Presbyterian Church

417 North Fourth Avenue, Sandpoint, Idaho 83864

208-263-2047

office@fpcsandpoint.org

www.fpcsandpoint.org

Ministers

Members and Friends

Pastor Andy Kennaly

pastorandy@fpcsandpoint.org

Pastor cell phone: 208-304-5488

Office hours

Tuesday 9:00-12:00

Wednesday 9:00-11:00